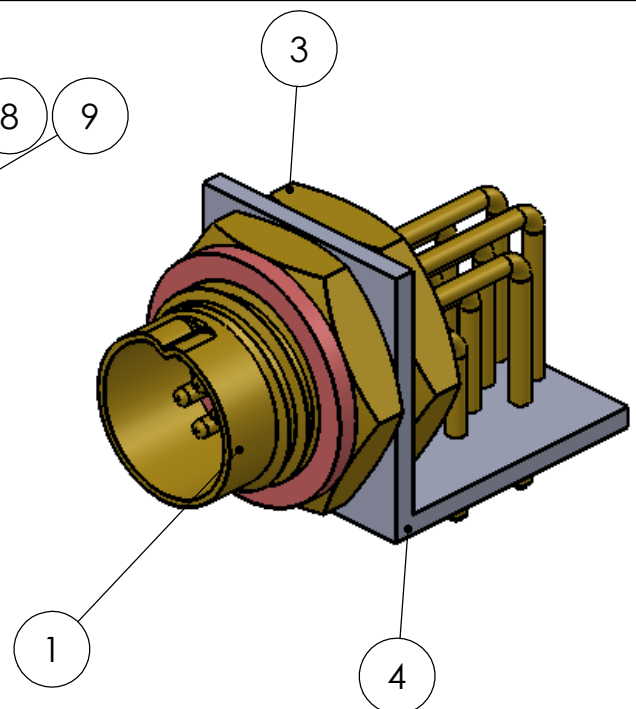
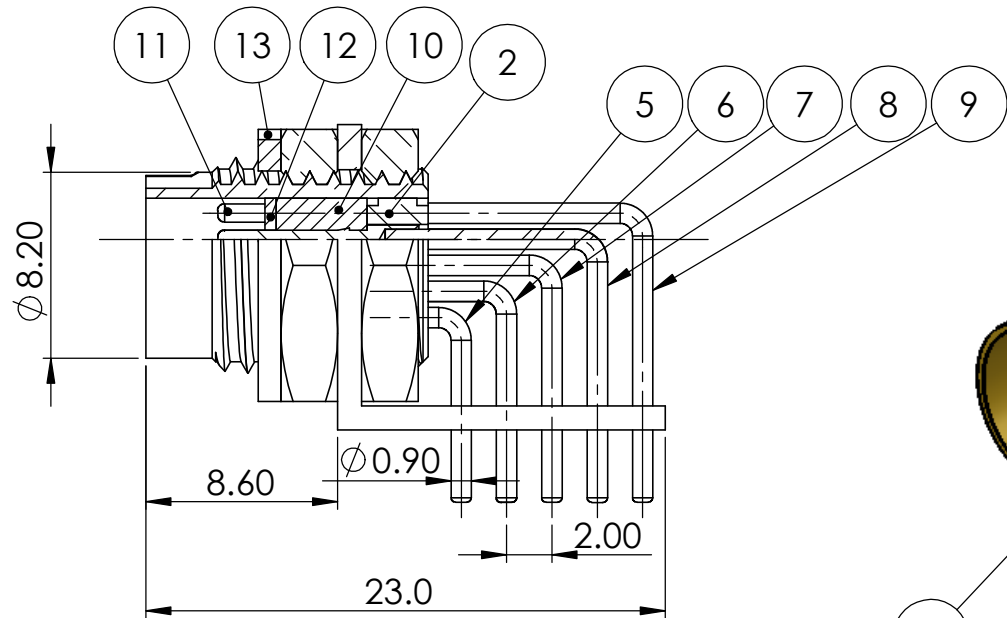
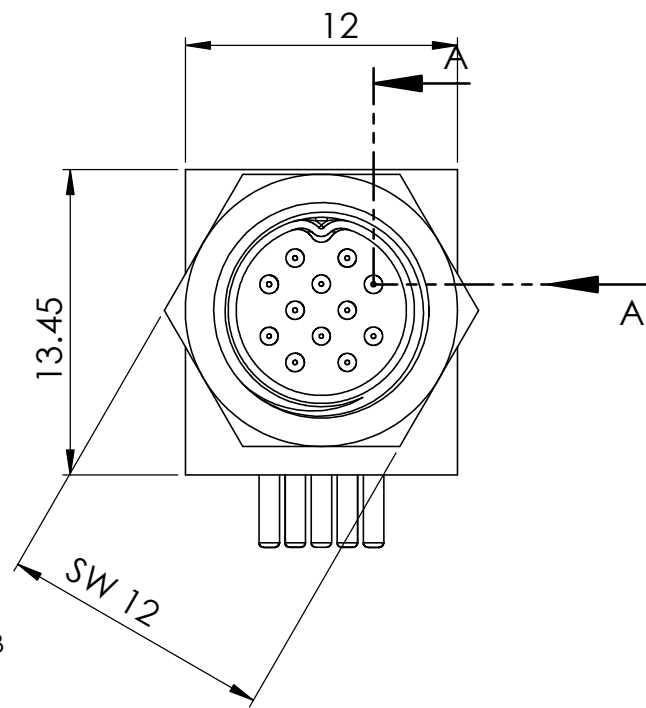
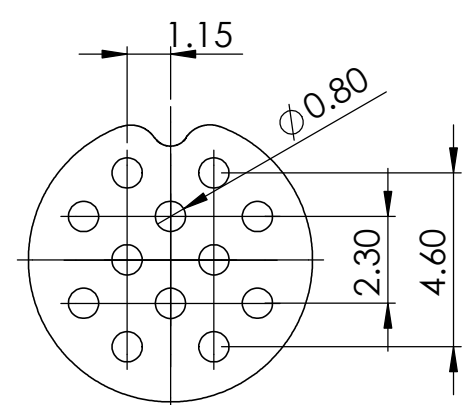


NOTES:

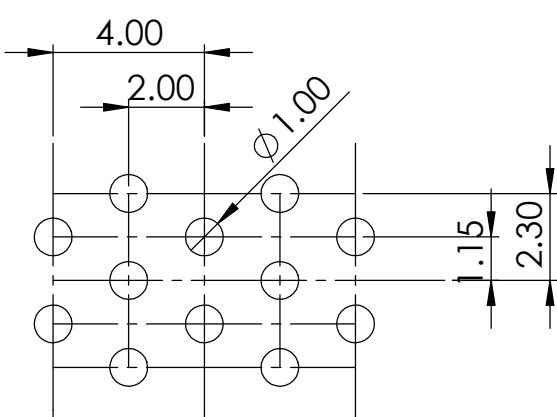
- 1. MATERIALS: "G" STYLE
 - 1.1 SHELL, FERRULE
BRASS PER QQ-B-626
FINISH: GOLD, OVER
ELECTROLESS NICKEL
PER MIL-G-45204, TYP 2, CLASS 1
 - 1.2 INSERT
PEEK, GLASS FILLED PER
MIL-P-46183
 - 1.3 CONTACTS
COPPER ALLOY
FINISH: GOLD PER MIL-G-45204
 - 1.4 GASKETS (OPTIONAL)
SILICONE RUBBER PER AMS 3304
 - 1.5 ALTERNATE SHELL MATERIALS
AND FINISHES:
"M" STYLE: BRASS, WITH
ELECTROLESS NICKEL FINISH
PER AMS-C-26074, CLASS 4, GRADE B
"A" STYLE: BRASS, WITH GOLD PLATE,
BLACK CHROMATE
"K" STYLE: STAINLESS STEEL,
300 SERIES, WITH PASSIVATION



SECTION A-A
SCALE 3 : 1



12 POSITION



PCB LAYOUT

REVISION HISTORY		
REVISION	DATE	COMMENT

NO.	DESCRIPTION	QTY.	MATERIAL	PLATING	REMARKS
1	Housing Plug-F-12P	1	BRASS	GOLD	
2	Insert-F-12P	1	PEEK		30% GLASS FILL
3	Nut-F-12P	2	SS		
4	Bracket-F-12P	1	SS		
5	Pin typ 1-F-12P	2	COPPER ALLOY	GOLD	
6	Pin typ 2-F-12P	3		GOLD	
7	Pin typ 3-F-12P	2		GOLD	
8	Pin typ 4-F-12P	3		GOLD	
9	Pin typ 5-F-12P	2		GOLD	
10	Insert1-F-12P	1	PEEK		30% GLASS FILL
11	Contact Pin-F-12P	12	COPPER	GOLD	
12	Block-F-12P	1			
13	O-Ring-F-12P	1			

UNLESS OTHERWISE NOTED:
DIMENSIONS ARE IN MILLIMETERS
DO NOT SCALE THIS DRAWING

.X DECIMALS ARE ± 0.5
.XX DECIMALS ARE ± 0.25
.XXX DECIMALS ARE ± 0.13
ANGLES ARE ± 0.5°

DRAWING	MILSPECWEST-MICRO PRODUCTS	
CHECKED	DESCRIPTION: MICRO 90 DEG PCB MOUNT RECEPTACLE - 12 POSITION	
Q.A.	DWG. NO. MSW-G-F-12P	REVISION: 0
		SHEET 1 OF 1

THIS DOCUMENT IS SOLE PROPERTY OF MILSPECWEST AND IS ISSUED IN STRICT CONFIDENCE THAT IT WILL NOT BE REPRODUCED IN ANY WAY OR USED TO SOLICIT BUSINESS OF A COMPETITIVE NATURE. DISTRIBUTION OF THIS DOCUMENT IS PROHIBITED UNLESS WRITTEN CONSENT IS OBTAINED FROM MILSPECWEST. THIS DOCUMENT IS SUITABLE FOR ENGINEERING EVALUATION AND MAY BE USED IN TECHNICAL SPECIFICATIONS.