

NOTES:

1. MATERIALS: "G" STYLE

1.1 SHELL, FERRULE

BRASS PER QQ-B-626

FINISH: GOLD, OVER

ELECTROLESS NICKEL

PER MIL-G-45204, TYP 2, CLASS 1

1.2 INSERT

PEEK, GLASS FILLED PER

MIL-P-46183

1.3 CONTACTS

COPPER ALLOY

FINISH: GOLD PER MIL-G-45204

1.4 GASKETS

SILICONE RUBBER PER AMS 3304

1.5 ALTERNATE SHELL MATERIALS

AND FINISHES:

"M" STYLE: BRASS, WITH

ELECTROLESS NICKEL FINISH

PER AMS-C-26074, CLASS 4, GRADE B

"A" STYLE: BRASS, WITH GOLD PLATE,

BLACK CHROMATE

"K" STYLE: STAINLESS STEEL,

300 SERIES, WITH PASSIVATION

REVISION HISTORY

REVISION

DATE

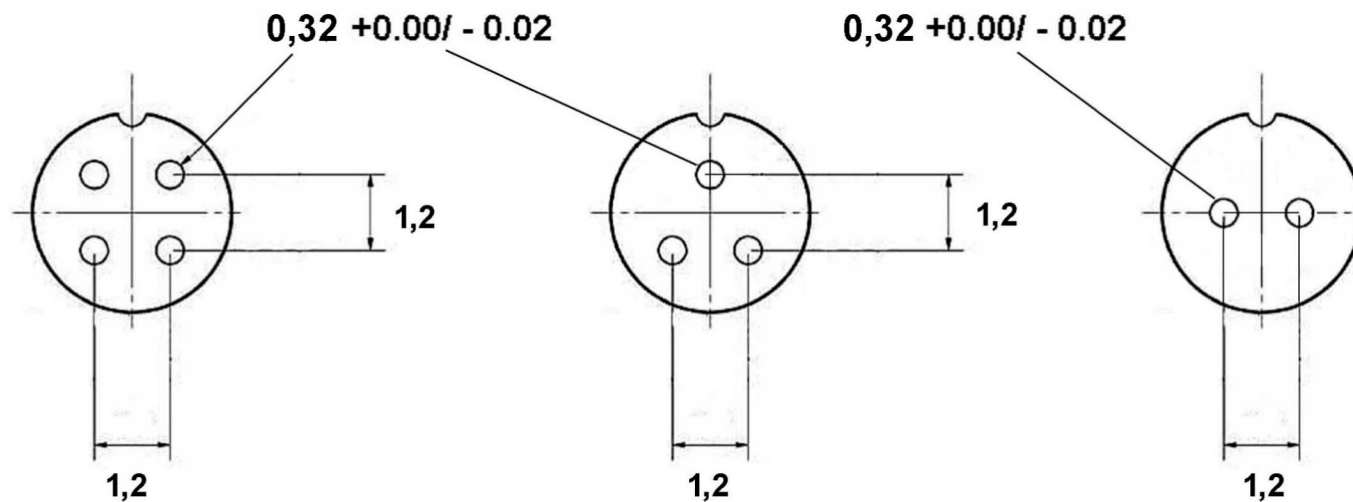
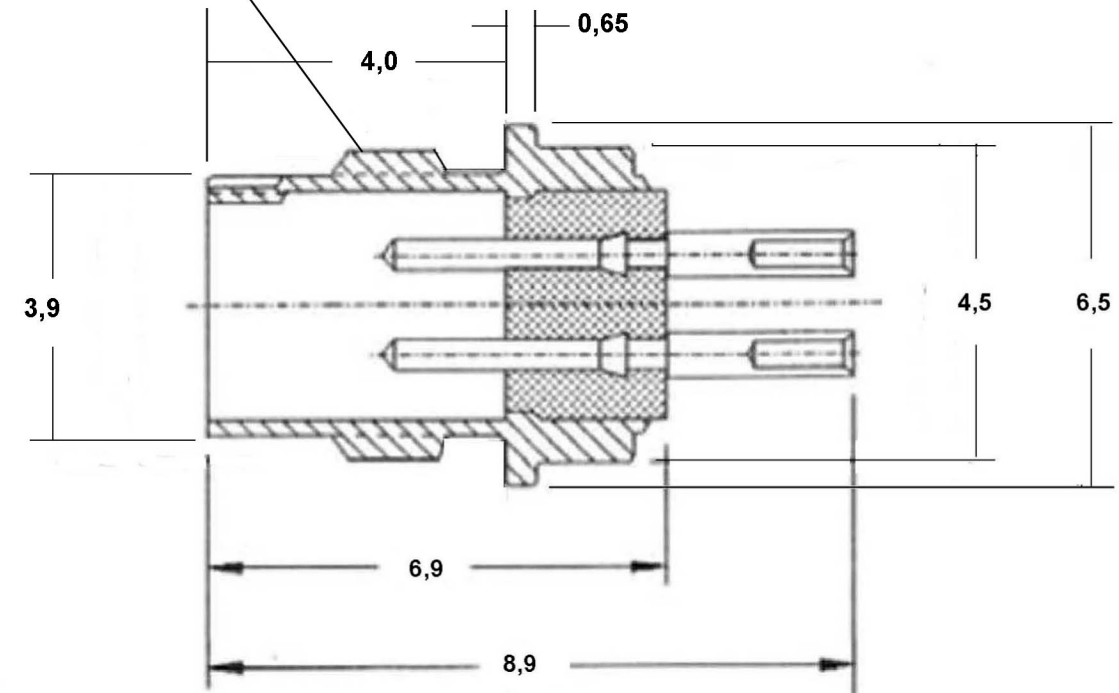
COMMENT

0

02 /10 / 17

INITIAL RELEASE

M4,5 X ,35 THREAD



4 POSITION

3 POSITION

2 POSITION

UNLESS OTHERWISE NOTED:
DIMENSIONS ARE IN MILLIMETERS
DO NOT SCALE THIS DRAWING

.X DECIMALS ARE ± 0.5
.XX DECIMALS ARE ± 0.25
.XXX DECIMALS ARE ± 0.13

ANGLES ARE $\pm 0.5^\circ$

DRAWING

SC

MILSPECWEST - MICRO PRODUCTS
CAGE CODE: 3HD49

CHECKED

TS

DESCRIPTION:

ULTRA MICRO SOLDER MOUNT

Q.A.

KB

DWG. NO.

MSWU-*E-***

REVISION: 0

SHEET 1 OF 2

THIS DOCUMENT IS SOLE PROPERTY OF MILSPECWEST AND IS ISSUED IN STRICT CONFIDENCE THAT IT WILL NOT BE REPRODUCED IN ANY WAY OR USED TO SOLICIT BUSINESS OF A COMPETITIVE NATURE. DISTRIBUTION OF THIS DOCUMENT IS PROHIBITED UNLESS WRITTEN CONSENT IS OBTAINED FROM MILSPECWEST. THIS DOCUMENT IS SUITABLE FOR ENGINEERING EVALUATION AND MAY BE USED IN TECHNICAL SPECIFICATIONS.